

### Viewings

Viewings by arrangement only.  
Call 0114 2666300 to make an appointment.

### Vendors Comments

Add text here

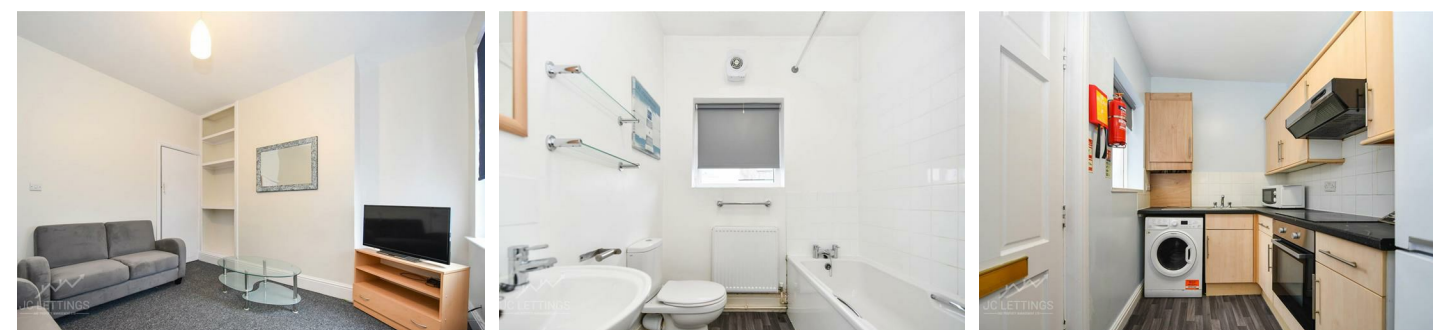
Energy Efficiency Rating		
	Current	Potential
Very energy efficient - lower running costs		
(92 plus) <b>A</b>		
(81-91) <b>B</b>		
(69-80) <b>C</b>		80
(55-68) <b>D</b>		
(39-54) <b>E</b>	54	
(21-38) <b>F</b>		
(1-20) <b>G</b>		
Not energy efficient - higher running costs		
<b>England &amp; Wales</b>	EU Directive 2002/91/EC	

**JC SALES & LETTINGS**

Tel: 0114 483 0038

E-mail: [sales@jc-salesandlettings.com](mailto:sales@jc-salesandlettings.com)

Website: [www.jc-salesandlettings.com](http://www.jc-salesandlettings.com)



29 Harefield Road, Sheffield, S11 8NU

£85 Per week

- Student: £85 per person per week
- Bills included option includes gas, electricity, fibre internet, TV licence and water bills
- Perfectly placed for Sheffield Hallam University
- Excellent location, close to an abundance of local amenities
- Four good sized bedrooms
- Bills included option available at £111 per person per week
- Situated just off Ecclesall Road
- Available for a group of 4
- Separate living room and kitchen
- EPC Grade E





## 29 Harefield Road, Sheffield S11 8NU

\*\*\* STUDENT \*\*\* £85 PER PERSON PER WEEK \*\*\* BILLS INCLUDED OPTION AVAILABLE AT £111 PER PERSON PER WEEK (Includes: Gas, electricity, fibre internet, water and TV licence) \*\*\* AVAILABLE FOR A GROUP OF 4 \*\*\*

A WELL LOCATED, four bedroom mid terrace property, located just off ECCLESALL ROAD. Ideal for STUDENTS studying at SHEFFIELD HALLAM UNIVERSITY and close to an abundance of local amenities.

In brief the accommodation comprises: lounge, separate kitchen and large double bedroom to the ground floor. To the first floor are two double bedrooms and a bathroom/WC. To the second floor is a large double bedroom.

An early viewing is highly recommended to avoid disappointment!

EPC Grade E.



Council Tax Band: B

